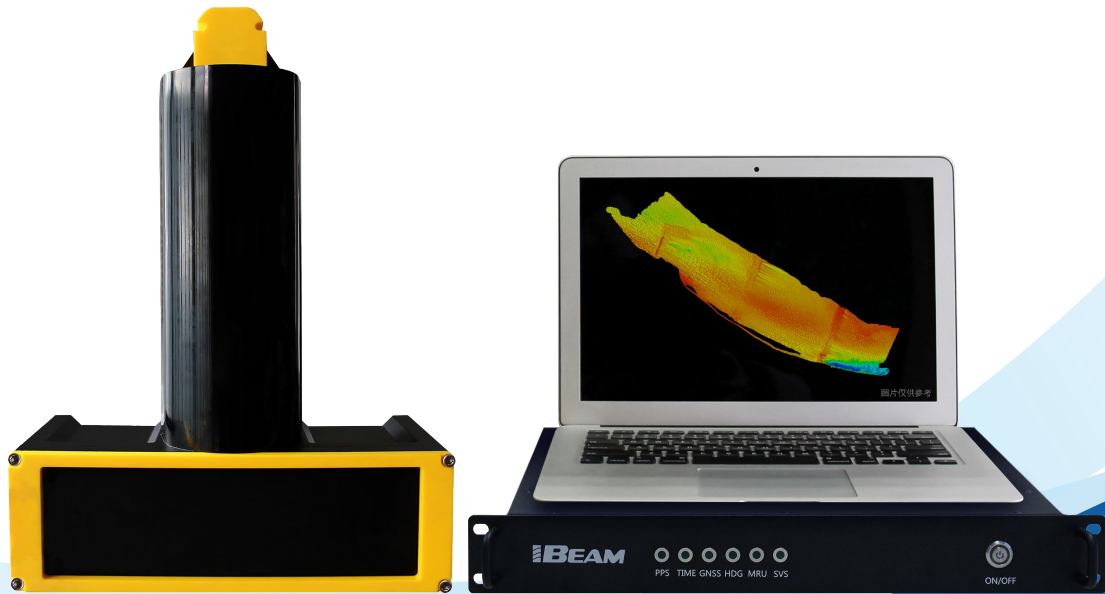


HI-TARGET

iBeam 8140 Multibeam Echo Sounder



System Introduction

The iBeam 8140 is a highly integrated shallow water multi-beam sounding system from Hi-Target that enables roll-free and tilt-free installation calibration, and the transducer is compact and portable.



Wide-angle coverage
up to 145°



Real-time roll stabilization
maximizing usable swath



Compact integral structure
and easy assembly



User-friendly display
software

Main Configuration

Frequency	400kHz
Swath coverage	30°~ 145°(agile)
Resolution	1cm
Angle	Along-track beam angle 0.75°*0.75°
Number of beams	512↑(Max)
Range	0.5m-180m
Depth rate	50m
Ping rate	Up to 60Hz
Work mode	Equiangular mode/Equidistant mode
Roll stabilization	±10°
Input voltage	220VAC/50Hz
Power	200W
Temperature(Work/Storage)	Sonar system: -2°C~40°C/-30°C~55°C Transducer: -2°C~30°C/-30°C~55°C
Transducer cable length	Standard 15m (Optional)
Transducer weight/size	14.5kg (in air) /340 x 470 x 200 mm
Deck unit weight/ size	2.5kg /410 x 330 x 50 mm

